



# MANUFACTURER NEWLIFE MAGNETICS

## MACO PRINTING MAGNETS SPECIFICATION SHEET

MACO RM MAGNET SHEETING SERIES

**RM-IP43**

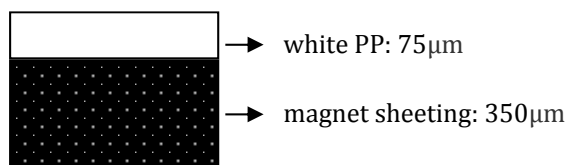
Edition: A0

NO: NMEQS-MACO 275

### FEATURES AND ADVANTAGES:

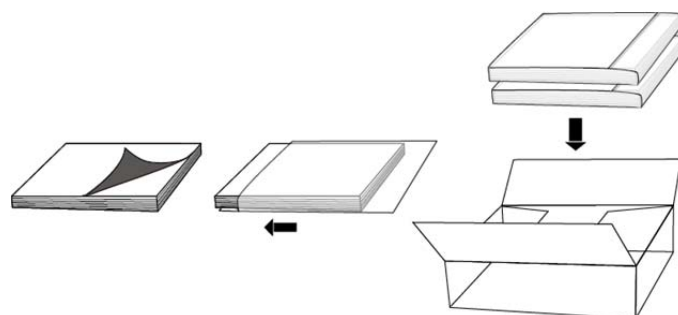
- White PP with magnet sheeting, compatible for HP Indigo and off-set print, post-magnetized
- After being magnetized the magnet sheeting is fully energized and it is easy to apply, remove and change without leaving any residue.
- Infinite magnetic receptivity, material will not rust.

### CONSTRUCTION DRAWING:



### STANDARD SIZE AND PACKAGING:

|                      |           |
|----------------------|-----------|
| 460×305mm            | 18"x12"   |
| 460×320mm            | 18"x12.6" |
| 483×330mm            | 19"x13"   |
| 100 or 200pcs/carton |           |



### PHYSICAL DATA:

|                  |                             |
|------------------|-----------------------------|
| Total thickness  | 430µm (±43)                 |
| Weight           | 1260g/m <sup>2</sup> (±126) |
| Opacity          | 100%                        |
| Water resistance | middle                      |

### MAGNETIC DATA:

|                |                          |
|----------------|--------------------------|
| Pull Strength: | ≥18 (g/cm <sup>2</sup> ) |
| Pole Pitch:    | 1.0mm or 1.5mm           |

### PROCESS AND STORAGE:

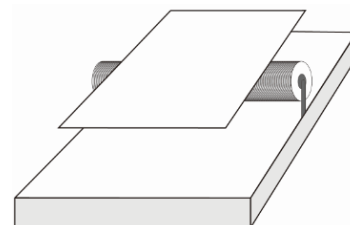
- Working condition: temperature 15°C/59°F to 30°C/86°F, and relative humidity 20% to 30%.
- Application condition: temperature change is within 20°C/68°F daily, relative humidity change is within 20%.
- Storage condition: closed package to preserve, avoiding sunlight, in temperature 10°C/50°F to 35°C/95°F, relative humidity 20% to 40%
- Shelf life: 12 months under storage condition. Unfinished material should be seal-packed, and used up within 2 weeks.

### NOTICE:

- Not recommend to use in high humidity area (outdoor humidity is over 60%).
- Magnetization:



handle magnetizer



semi-automatic magnetizer

Apply the magnetizer directly on the magnet side, and move the magnetizer or magnets in one direction, to make sure the whole magnet sheet is magnetized and there are no un-magnetized areas on the sheet.